

**CLEANING AND  
MAINTENANCE-  
FRIENDLY**

---

---

**ROBUST  
CONSTRUCTION**

---

---

**HIGH LOAD  
CAPACITY UP TO  
6,000 KG**

---

---

# FLOOR SCALE

Robust weighbridge for heavy loads

# FLOOR SCALE

## ROBUST, RELIABLE AND VERSATILE

Whether for simple weight measurement, dosing, filling or checking filling quantities, our floor scales are perfect for all applications in industrial environments. Caused by its robust design, it delivers reliable weight values over a long period of time, even with heavy loads. Due to a wide range of variants and options, you can easily integrate our floor scale into your process chain – whether in production or goods logistics.

### \_ SOLID DESIGN

The frame construction made of thick-walled tubes and the load plate made of 6 mm solid material make the floor scale resistant to mechanical loads and extreme production influences. Due to the overall design, the scale remains dimensionally stable even under heavy loads and delivers consistently precise measurements by using robust strain gauge load cells.

### \_ LOW OVERALL HEIGHT

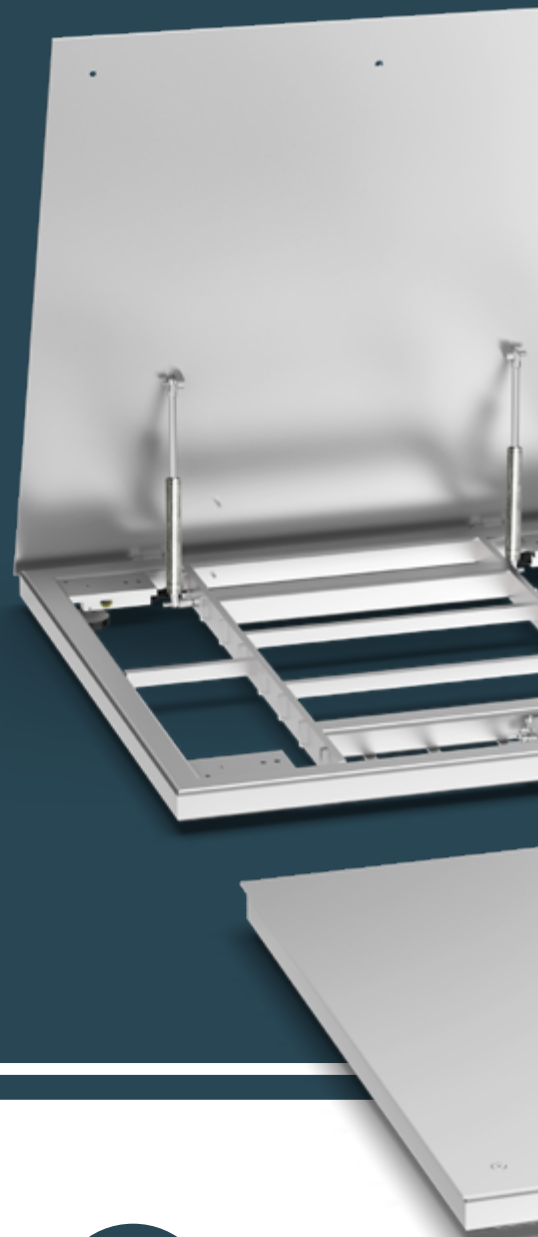
Its low height, even with high load ranges, enables simple integration within existing production chains. It can be installed both at floor level and can also be installed as an above-ground scale. Appropriate accessories such as ramps or foundation frames and trays facilitate integration.

### \_ HIGH LOAD CAPACITY

Even the standard version of our floor scale offers a weighing range of up to 6,000 kg with dimensions of up to 2,000 mm. Do you need larger dimensions or a higher capacity? We will be happy to manufacture a customised solution according to your specifications.

### \_ HIGH-QUALITY WORKMANSHIP

The frame construction, load plate and load cells are all made of high-quality stainless steel. This makes the floor scale particularly suitable for use in harsh, wet environments and resistant to water and cold. It can also easily withstand increased cleaning loads.



## THE SOLUTION FOR YOUR COMPANY



Foodstuffs



Chemicals



Pharmaceuticals



Logistics



Waste Recycling

**HIGHEST STANDARD:** Made in Germany | IP65 | IP68 | IP69 | calibratable | AISI 304 | AISI 316

# TOP 5 BENEFITS

## 1. DURABLE AND EFFICIENT

The robust construction and the exclusive use of stainless steel components offer a long service life and reduce the need for frequent replacement purchases. The modular design makes the scales easy to repair, which above all maximises operating times.

## 2. EASY CLEANING AND MAINTENANCE

In addition to the overall construction made of high-quality stainless steel, the hinged load plate and a foundation tray make the scales particularly easy to clean and maintain.

## 3. DIRECT SYSTEM INTEGRATION

In combination with our industrial weighing terminals, the scale offers numerous interfaces and software options to collect recorded data centrally or transfer it directly to your ERP system.

## 4. APPLICATION VARIANTS THROUGH ACCESSORIES

Additional accessories such as access ramps, foundation frames and foundation trays enable even better integration into your production environment.

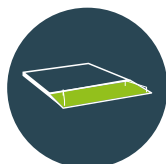
## 5. CUSTOMISABLE

Our floor scales are customised to your needs - from the choice of material and surface treatment to the platform size and specific constructions. Do you have other special requirements? We'll find the right solution together!

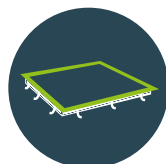
## OPTIONS AND EXTENSIONS



ATEX



Access ramp



Foundation frame



Foundation trough



Stoppers and wheel recesses

# WHY HÖFELMEYER?

## OUR GUARANTEE OF SUCCESS

### Right from the start ...

We sell our customers solutions rather than products. To do so, we first take a close look at your company and then we adapt our weighing systems to precisely meet the needs of your production environment. To the millimetre.

### ... to the very end!

We won't leave you on your own. We'll help with process integration and show you how to make the most of your opportunities to make your processes more digital, more productive and more resource-saving with our innovations.



## OUR SERVICES

### ALWAYS THERE FOR YOU!

**From comprehensive and customized consulting, to installation, process integration, commissioning and maintenance:** We'll be a reliable partner for you for the entire product life cycle – fast, reliable and on an eye-to-eye-level.

But there's more: We're even happy to help you with your third-party products!

Just ask.



**Consulting | Training**  
Our know-how  
for your process



**Remote service**  
Free online support



**Repairs**  
Straightforward  
and fast help



**Renting | Leasing**  
A real investment  
alternative



**Verifications | DAKS**  
To ensure the reliability of  
your measurements



**Maintenance**  
For long-lasting  
products

## HÖFELMEYER

HÖFELMEYER WAAGEN GmbH

Werner-von-Siemens-Straße 33  
49124 Georgsmarienhütte, Germany  
www.hoefelmeyer.de  
Tel.: +49 (0)5401 4977 0