

X-Ray System

precise | intuitive to operate | compact



Precise performance in process-oriented applications

- For your customers' safety
- To maintain your high quality standard



■ Service-friendly construction

Used as a contaminant detection component, X-Ray Systems ensure that your products reach your customers in top quality and without impurities. Impurities in food, granulates or liquids, for example, not only lead to an enormous loss of cost and time. Contamination scandals usually also mean long-term damage to your company's image. The Höfelmeyer X-Ray Scanner is a precise inspec-

tion system that offers you maximum safety for your production.

The crucial factor is where and in which combination X-Ray Systems are used.

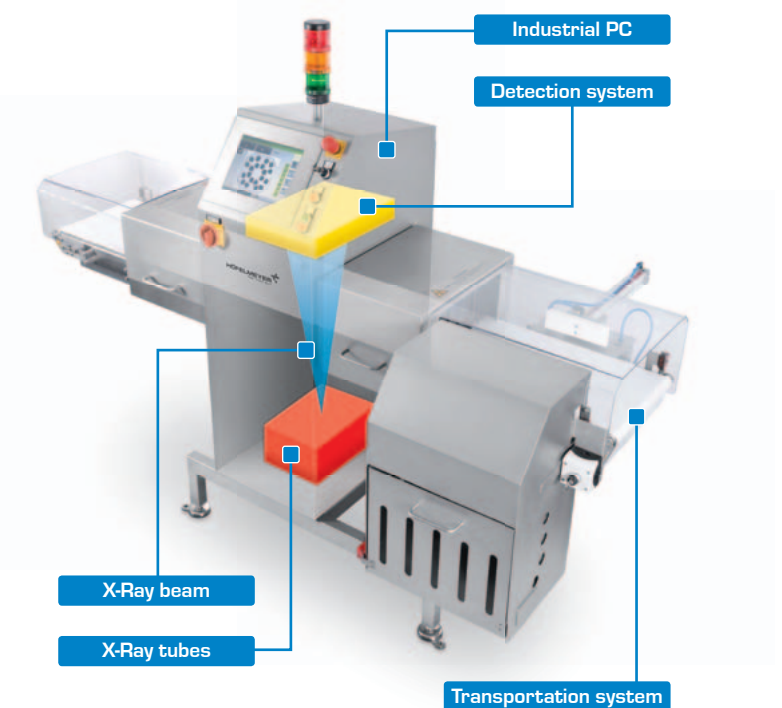
Multi-stage checks are usually a practical solution. We will be happy to advise you!

Advantages

- Check for different contaminants such as metal, glass, stones etc.
- Check on product characteristics such as completeness, weight, breakage, position
- Check on products in metallic packaging
- Data forwarded to Höfelmeyer HFPK software
- Simultaneous checks on up to 4 parallel product lines
- Easy to clean and service
- Conforms to BRC, IFS and HACCP

The Höfelmeyer X-Ray System detects both metallic and non-metallic product contaminants. Thanks to the detector resolution of 0.8 mm, even the tiniest of metal, glass, ceramic and stone contaminations can be spotted in food. It is even possible to detect some plastics such as PVC or rubber, as well as product faults such as cracks and air bubbles. In addition, the X-Ray Scanner also checks important attributes such as completeness or filling quantity. All products which do not comply with the requirements are automatically ejected from the line.

The Höfelmeyer X-Ray System is a modular system which is easy to service and clean. No matter whether you require a single-lane, multi-lane or multi-product check, our system has been tried and tested by the market and demonstrates a high degree of both flexibility and safety. The data determined by the X-Ray Scanner are transmitted to the HFPK software, where they can be used for product monitoring or documentation.



■ Components of the X-Ray System



■ Variant: X-Ray System for bulk goods

The characteristics and options of the Höfelmeyer X-Ray System

Safety factors

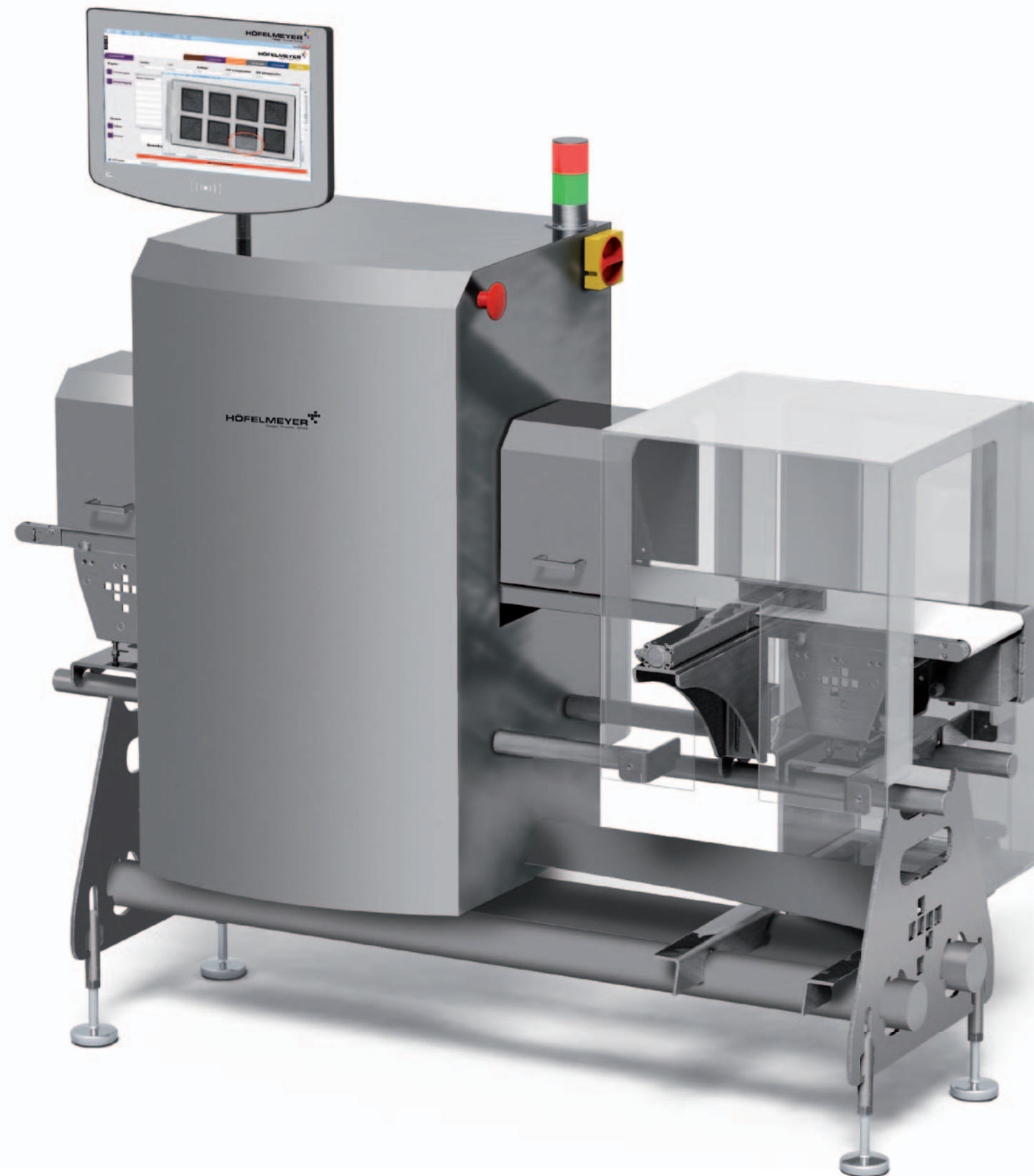
- Signal lamp for indicating standby, X-Ray operation or fault
- Incl. cover for the X-Ray tunnel (further covers available as an option)
- Safety switch for the automatic switch-off of the X-Ray source
- Horn
- Guide strips
- Compressed air monitor
- Ejector monitor
- Level check

Separating systems

- Pusher
- Blow nozzles
- Separating gates
- Ejection unit adapted for the product

Collection baskets

- For faulty products
- For contaminated products
- To BRC standard
- Lockable



Display

- Easy to use via touchscreen
- Automatic product teaching
- Intuitive and easy operation

Conveyor belt

- Hygienic and suitable for food
- Easily accessible for servicing
- Easy to clean

X-Ray source

- Maximum voltage: 80KV
- Maximum current: 2mA

Frame

- To hygienic design principles
- With modular structure
- Stainless steel material
- Conforms to BRC, IFS, HACCP

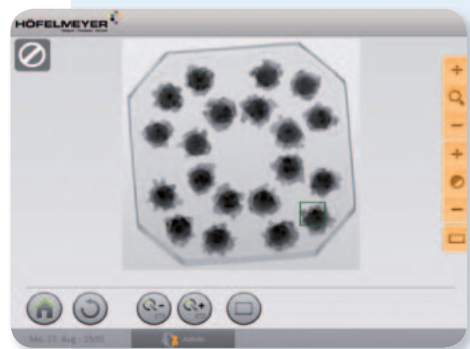
Interfaces

- Integrated Ethernet interface

Software & application



Autolearn function



Retrain region



Multi-product software

This software makes the simultaneous detection of different products possible (optional feature).

Operating and software elements of the X-Ray System

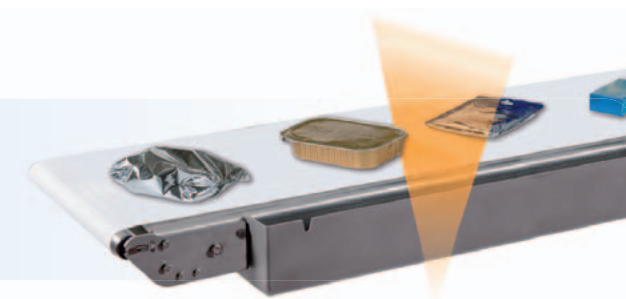
The X-Ray images are evaluated using product-specific visualization software. Soiled or faulty products are separated. Thanks to the straightforward Autolearn function, it is easy to learn a new product in a very short time. The new product runs through several times so that sensitiveness is automatically adjusted.

During production, the software may mark non-soiled products as scrap or fail to detect soiling that should be detected. The "retrain region" marks the position of the faulty triggering. Sensitiveness is reduced or increased at this point. Individual filters no longer have to be set manually, saving a great deal of time.

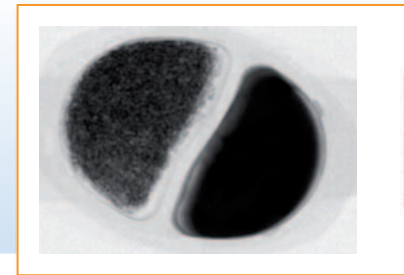
Applications

Connection to HFPK

Connection to the Höfelmeier HFPK software makes central management of X-Ray Systems possible. The batch results determined are recorded and evaluated. Fault patterns are saved for purposes of proof and the attribute check is evaluated. Connection to customer software is also possible.



Detection variants

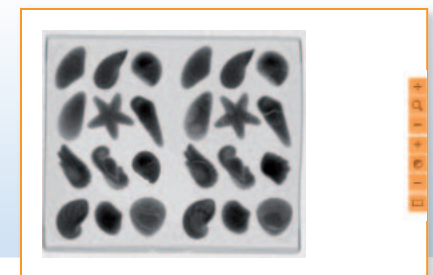
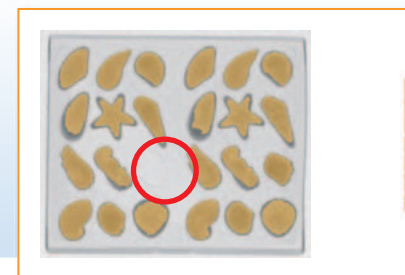


Ready meal

Weight check:
20 grams of rice
are missing!

Box of chocolates

Completeness check:
There is 1 chocolate
missing!

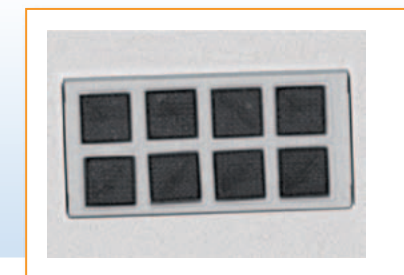
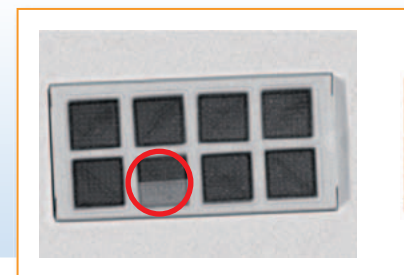
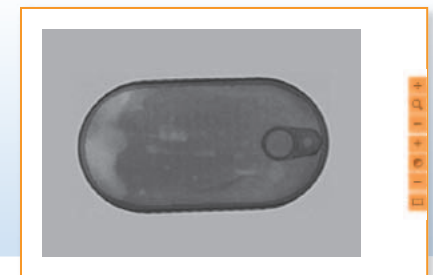


"Ignore clip"

Precision: The sensitivity
within the product is not im-
paired by ignoring the clip!

Tinned fish

Contamination detection
even in metal packaging!
An edge filter guarantees
high precision!



Box of biscuits

Filling quantity check:
Half a biscuit is missing!



Höfelmeyer Waagen GmbH | Georgsmarienhütte | Hüfingen | Neuss | Hamburg | Berlin | Leipzig
Tel. +49 5401 4977 0 | Fax +49 5401 4977 90 | waagen@hoefelmeyer.de | www.hoefelmeyer.de

We reserve the right to make changes. Special formats and other options on request.