

Floor Scale

reliable | hygienic | robust

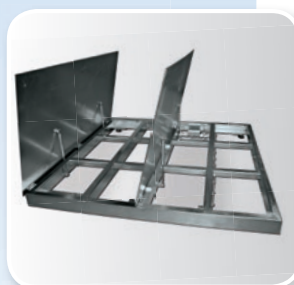


Reliable and Efficient Technology

- robust, low-profile construction
- ideal hygienic design
- wide range of options



- easy roll-on/roll-off for forklifts



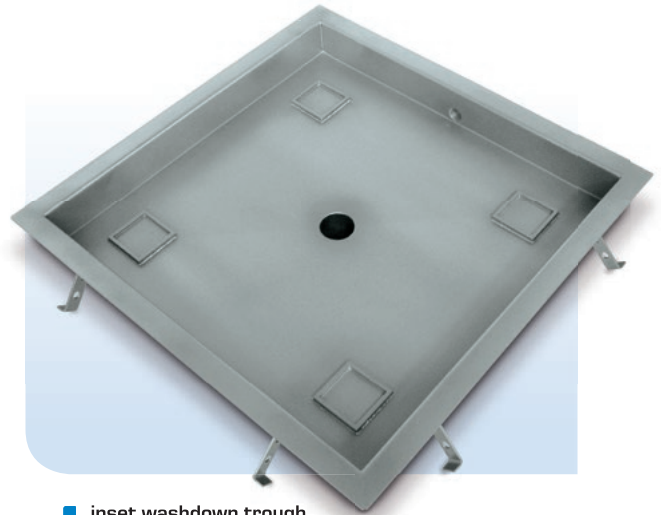
- practical double-opening option

The fully electronic Höfelmeyer Floor Scale provides quick and accurate weight measurement wherever you need it, whether for incoming goods, production or dispatch. The low-profile construction, ideal for roll-on/roll-off, can be pit-mounted or surface-mounted. Designed to meet the requirements of a wide range of industries

and in accordance with government regulations, the Höfelmeyer Floor Scale supports you in every part of your process chain. This high-precision scale helps you lower costs and increase product quality. It also enables more exact handling of raw materials and in so doing makes your processes more efficient.

Advantages

- extremely flat construction
- wide range of options
- low maintenance costs
- fast and easy to clean
- overload protection
- strain gauge load cells made of stainless steel, waterproof



■ inset washdown trough with drain

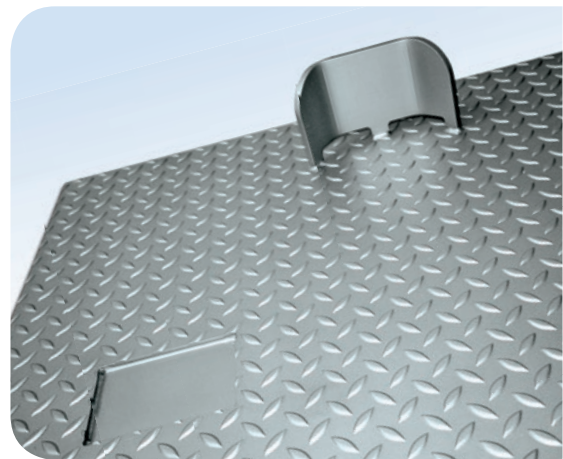
Options to Fit Your Requirements

Depending on the usage requirements and level of hygiene, our floor scales have either a bolted or welded platform. In order to comply with hygiene regulations, Höpelmeyer has constructed a hinged deck which opens by way of gas lifts to allow for easy, thorough cleaning and maintenance of the scale.

The inset washdown trough with drain and optional odor trap is an accessory that offers additional comfort for easy washdown.

The deck features an anti-slip tread plate which is highly recommended for wet environments. Additionally, the stopper and wheel recess option provides more safety when filling wheeled bins, because they cannot roll away. They are quickly steadied into place to allow for efficient filling and weighing results.

In the case of pit mounted scales, you can choose the foundation frame option which guarantees a clean, shock resistant pit edge.



■ anti-slip tread plate with stopper and wheel recess



■ foundation frame option



■ The floor scale can be combined with a variety of terminals.

Technical Data

Specifications

- Stainless steel V2A, V4A or standard steel
- 4 load cells made of high-grade stainless steel
- Sealing of the deck is protective class IP 65, 68 or 69K
- Adjustable feet enable easy levelling
- Junction box made of fiberglass or stainless steel
- Resistant to chemicals
- Includes a 6m measurement cable
- Height of 90 mm
- Max. load capacity 4,500 kg
- Operating temperature -10°C to +40°C

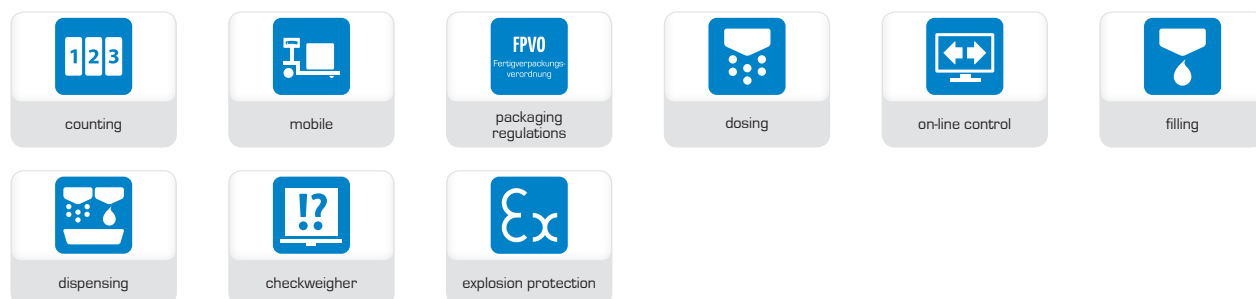
Options

- Painted surface, glass bead blasted or electropolished
- Deck reinforced or anti-slip tread plate
- Deck welded, bolted or hinged to open with gas lifts
- Pit mounted with foundation frame or inset washdown trough
- available for use as trade approved scale
- Explosion-proof
- Optional ramps
- Heavy-duty model option (construction height 150 mm)

		Platform Dimensions in Millimeters							
Capacities	Increments	800x800	1000x800	1000x1000	1250x1000	1250x1250	1500x1250	1500x1500	2000x1500
150 kg	10 g*	■	■	■	■	■	■	■	■
150 kg	50 g	■	■	■	■	■	■	■	■
60/150 kg	20/50 g	■	■	■	■	■	■	■	■
300 kg	20 g*	■	■	■	■	■	■	■	■
300 kg	100 g	■	■	■	■	■	■	■	■
150/300 kg	50/100 g	■	■	■	■	■	■	■	■
600 kg	50 g*	■	■	■	■	■	■	■	■
600 kg	200 g	■	■	■	■	■	■	■	■
300/600 kg	100/200 g	■	■	■	■	■	■	■	■
1500 kg	100 g	■	■	■	■	■	■	■	■
1500 kg	500 g	■	■	■	■	■	■	■	■
600/1500 kg	200/500 g	■	■	■	■	■	■	■	■
3000 kg	200 g*			■	■	■	■	■	■
3000 kg	1000 g			■	■	■	■	■	■
1500/3000 kg	500/1000 g			■	■	■	■	■	■

Custom sizes and other capacities available upon request.

* marked capacities and increments are not available approved



■■■■ trust in measure!

Höfelmeyer Waagen GmbH | Georgsmarienhütte | Hünfingen | Neuss | Hamburg | Berlin | Leipzig
Tel. +49 5401 4977 0 | Fax +49 5401 4977 90 | waagen@hoefelmeyer.de | www.hoefelmeyer.de

Information subject to change. The scales pictured in this brochure may show options that are not included in the standard price.